

SWITCH POINT OBSTRUCTION EVENT TEST

Purpose

- Objective of test is to ensure that an employee is engaged in the correct procedures of lining switches and to ensure switch points are not fouled by debris or obstruction

Equipment

- Approved Switch Point Obstruction device

Procedure

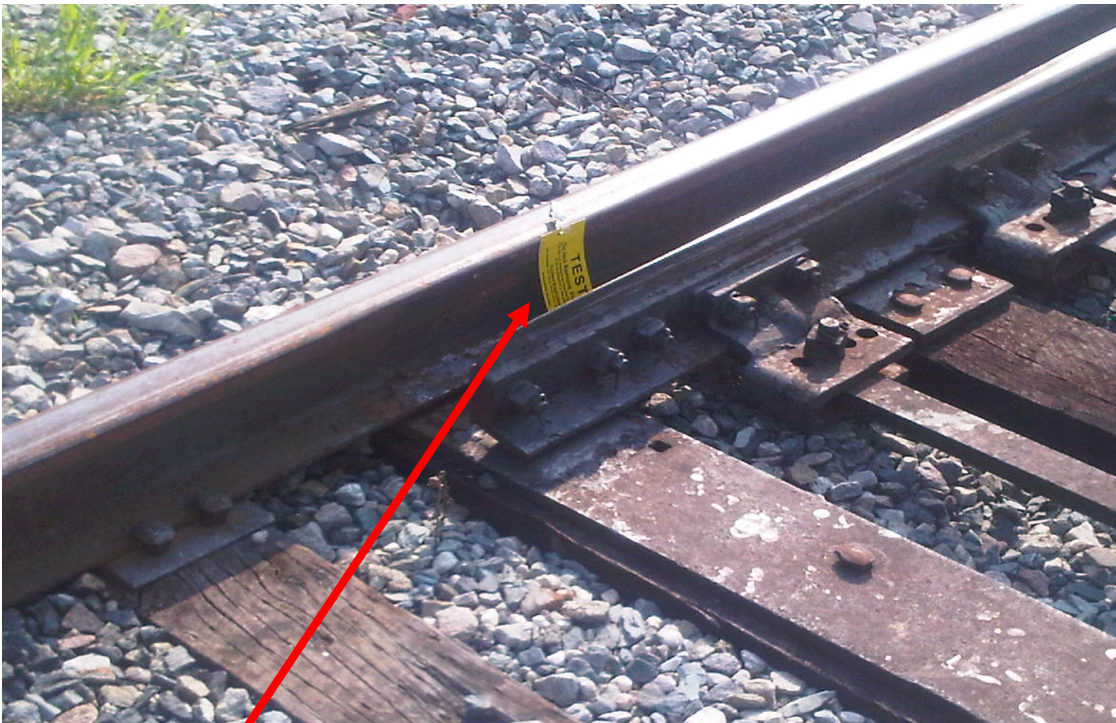
- Test can be performed any time an employee is actively engaged in handling switches

Applicable rules

- **103 (part 3), 104, 104-B, 104-C, 104-G, GS-18B**

Failure defined

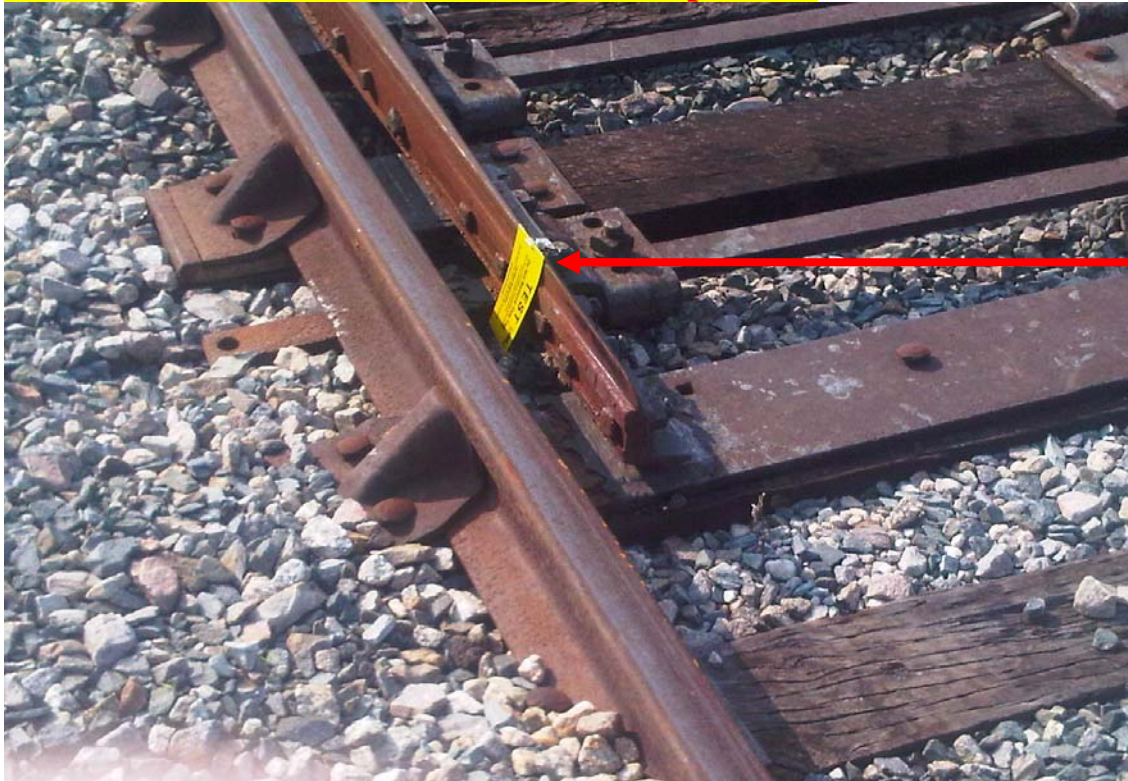
- Employee fails any of the applicable rules
- Employee fails to contact supervisor



Do not remove the test card – Contact a Supervisor!

When placed on the point as displayed below & the switch stand is on the opposite side, you will have to step into or cross the track to detect the test card!

Do not remove the test card – Contact a Supervisor!



Switch
Stand

GS-18 Before operating a switch or derail:

- Identify the type of switch or derail to be operated.
- Make certain that the device is not locked (including a switch point lock), spiked, or tagged out of service.
- **Make certain that there is nothing in the points of the switch or derail** that will interfere with its operation.
- Look in both directions for moving equipment.
- Make certain that **no obstructions** will interfere with operating the switch.

D. Operating a Switch or Derail

When operating a switch or derail:

- Face the device squarely.
- Keep foot firmly braced.
- **Grasp handle with both hands.**
- Do not use your feet for any purpose other than to operate the keeper or to apply the final downward pressure to the switch lever to latch it.
- Keep your body, hands, and feet clear of all moving parts.